

The image shows a close-up of a server rack with a blue tint. The word "SignaCert" is printed in white on a horizontal panel. Above and below the panel are rows of circular ventilation holes. To the right, there are three small white labels on the server units, each with some illegible text and a small icon.

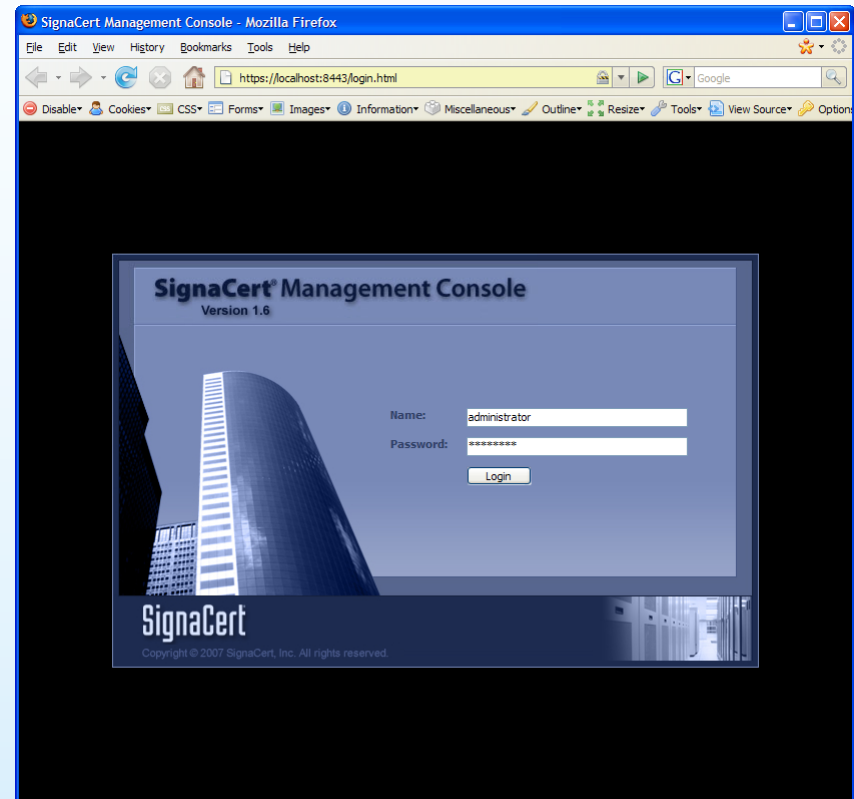
SignaCert

ETS 1.7 Release Summary

New Capabilities and Features

March 2008

- Major benefits delivered with 1.7 release
- Common usage - demonstration
- Features



- **Centralized Management**
 - Define device connections from ETS
 - Create and manage snapshots directly from ETS
 - Trigger verification for a device or group of devices from ETS
 - Don't need to switch to other device to perform scanning tasks
- **Simplified use**
 - Create common device connection components for reuse
 - Simplified integration with external scheduling tools
 - Simplified custom signature properties
- **Enable custom scripts**
 - Client supports external scripts for scanning other information types (e.g. registry settings, database schema)
 - Launch scripts from ETS console

User Acceptance Test
(UAT)



Application Upgrade



Production Servers



ETS provides PROOF
that the upgrade was complete
and correct

Prove that production servers match UAT after a required application update...



Exact Match—All files on production match the reference

...OR identify any differences between them



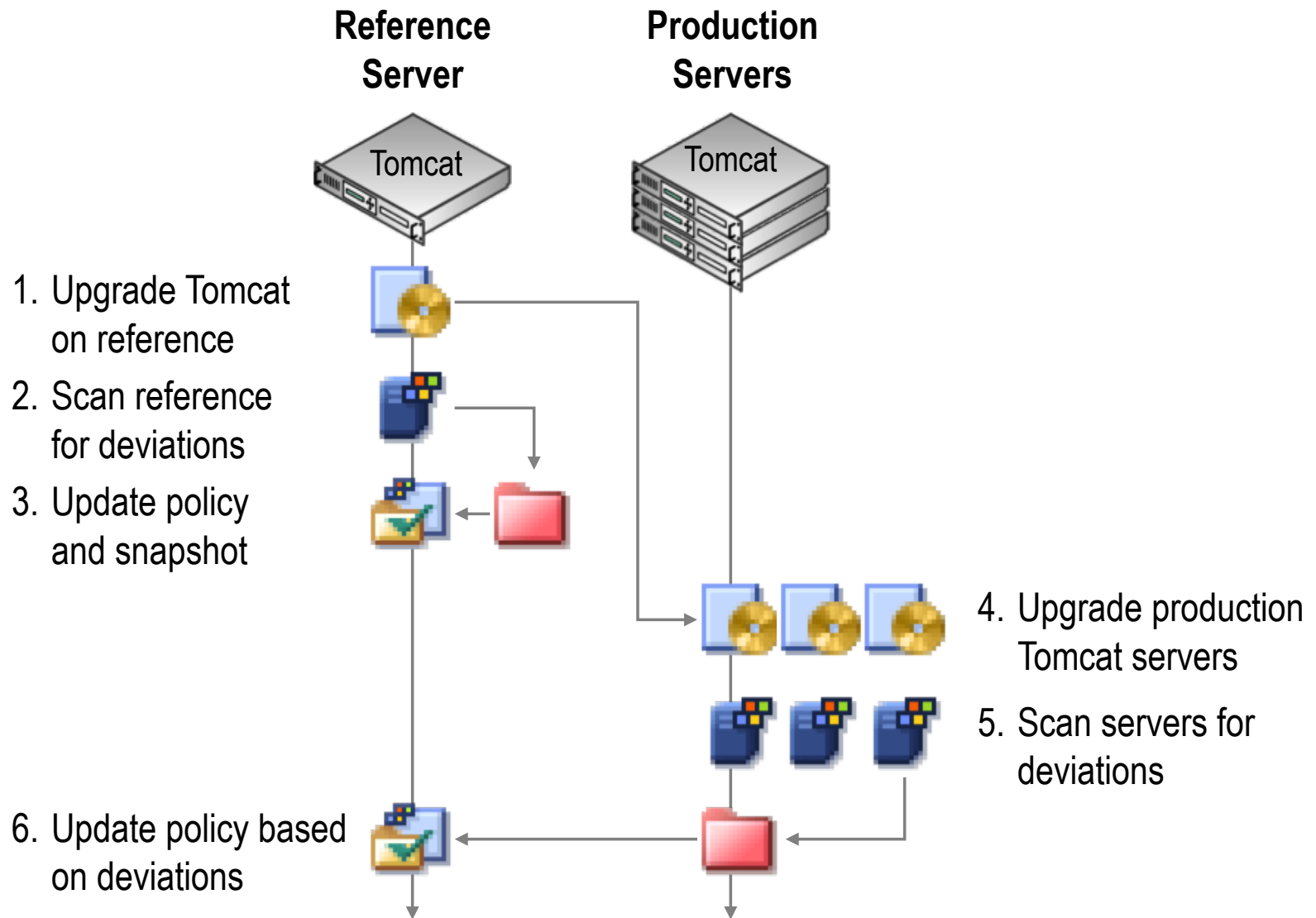
Modified—Which files have changed, even if they have the same filename, size and path



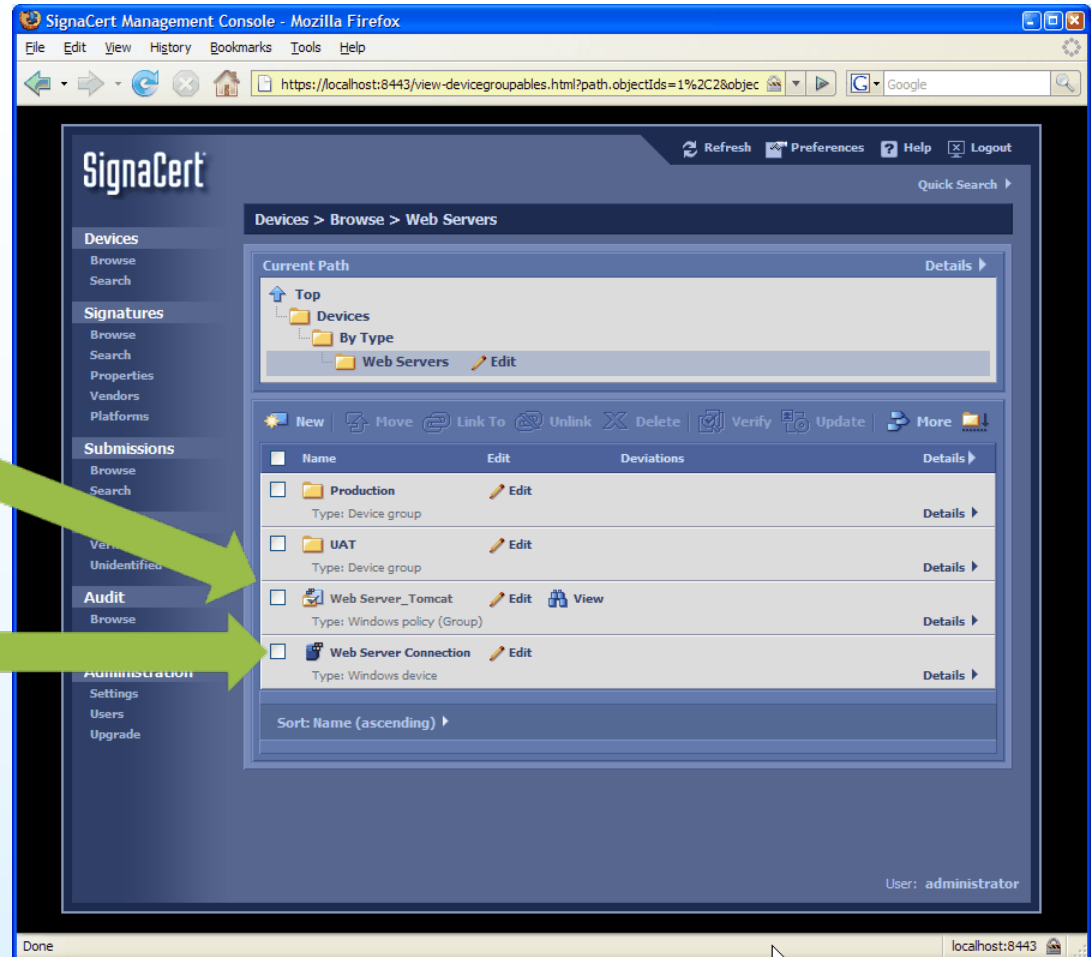
Removed—Which files are present in the reference but missing from production



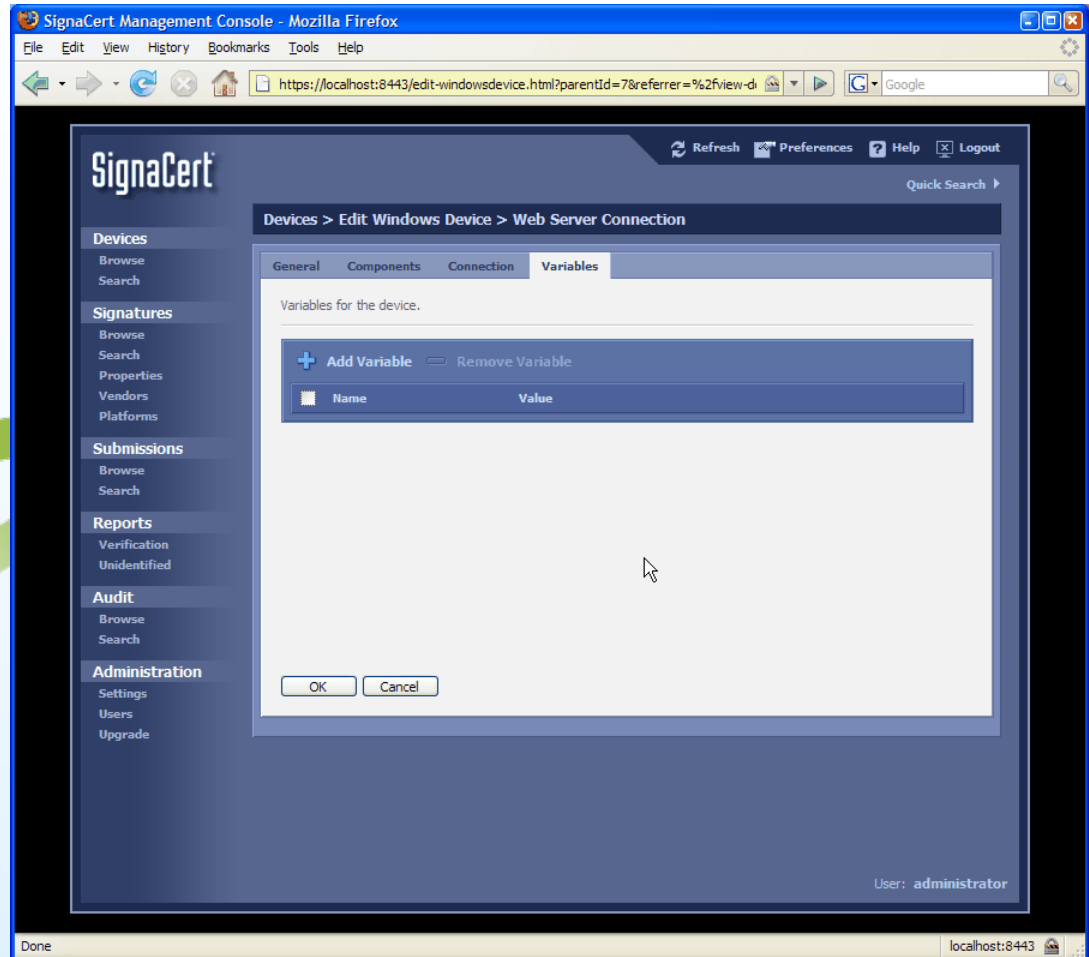
Added—Any files found that aren't part of the reference



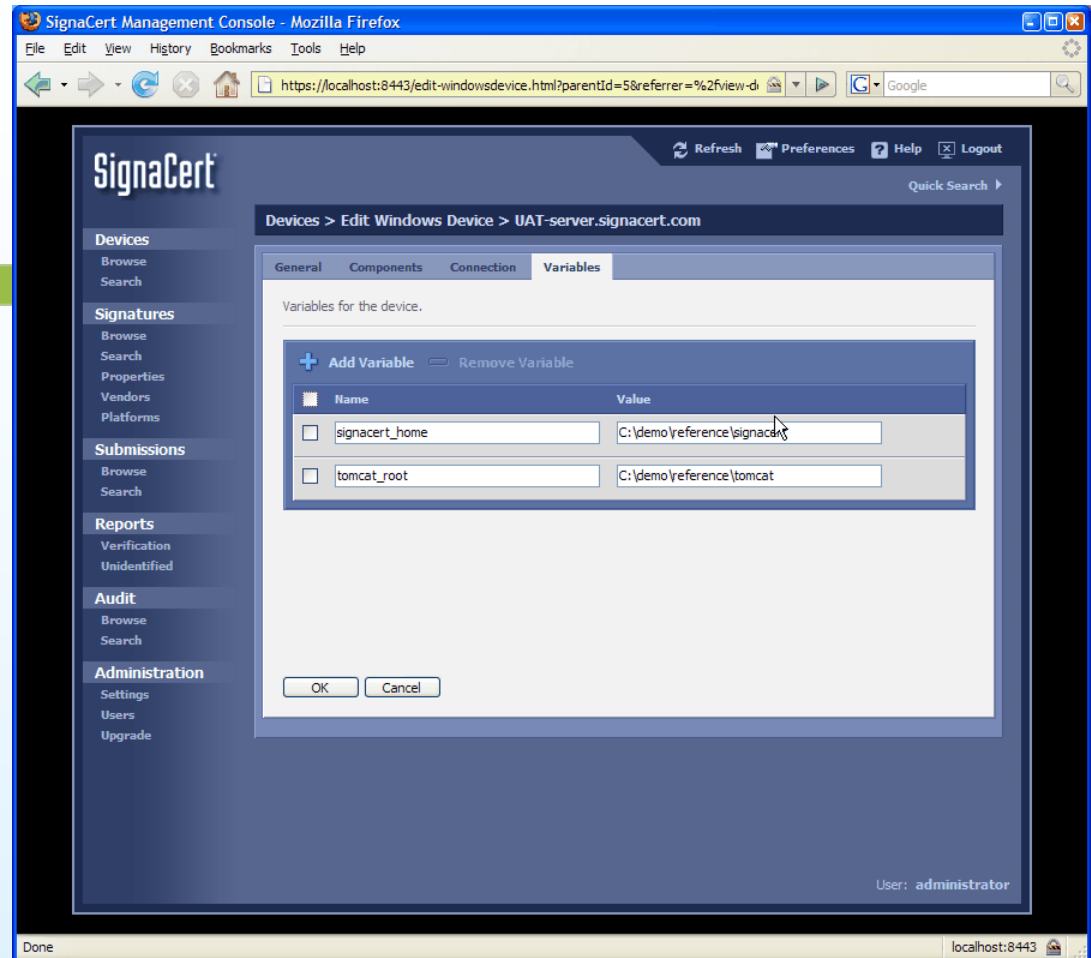
- Production and UAT device groups
- Common policy for verifying Tomcat
- Common **device component** defining Connection settings



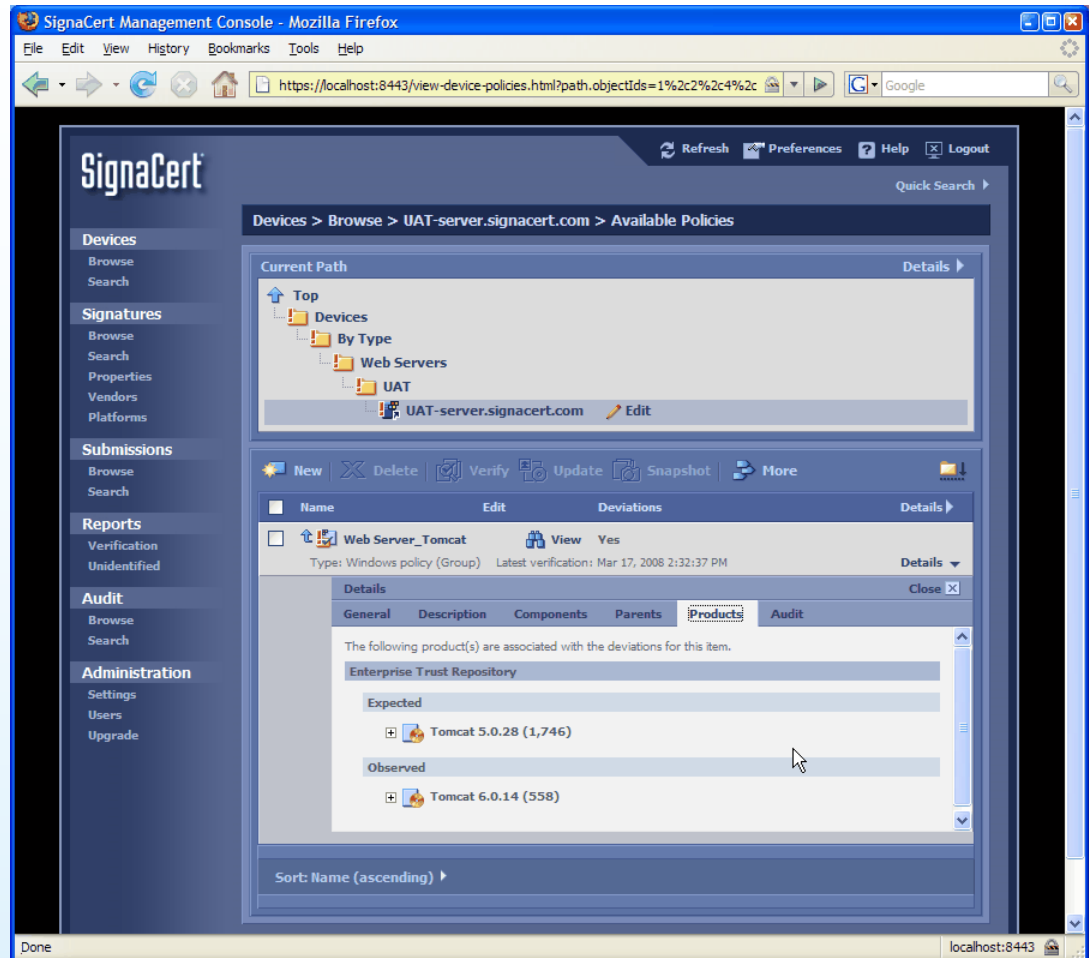
- Create “partial” devices with common attributes
- Can attach any device as a component
- Define and store **connection settings**
- Define any required variables



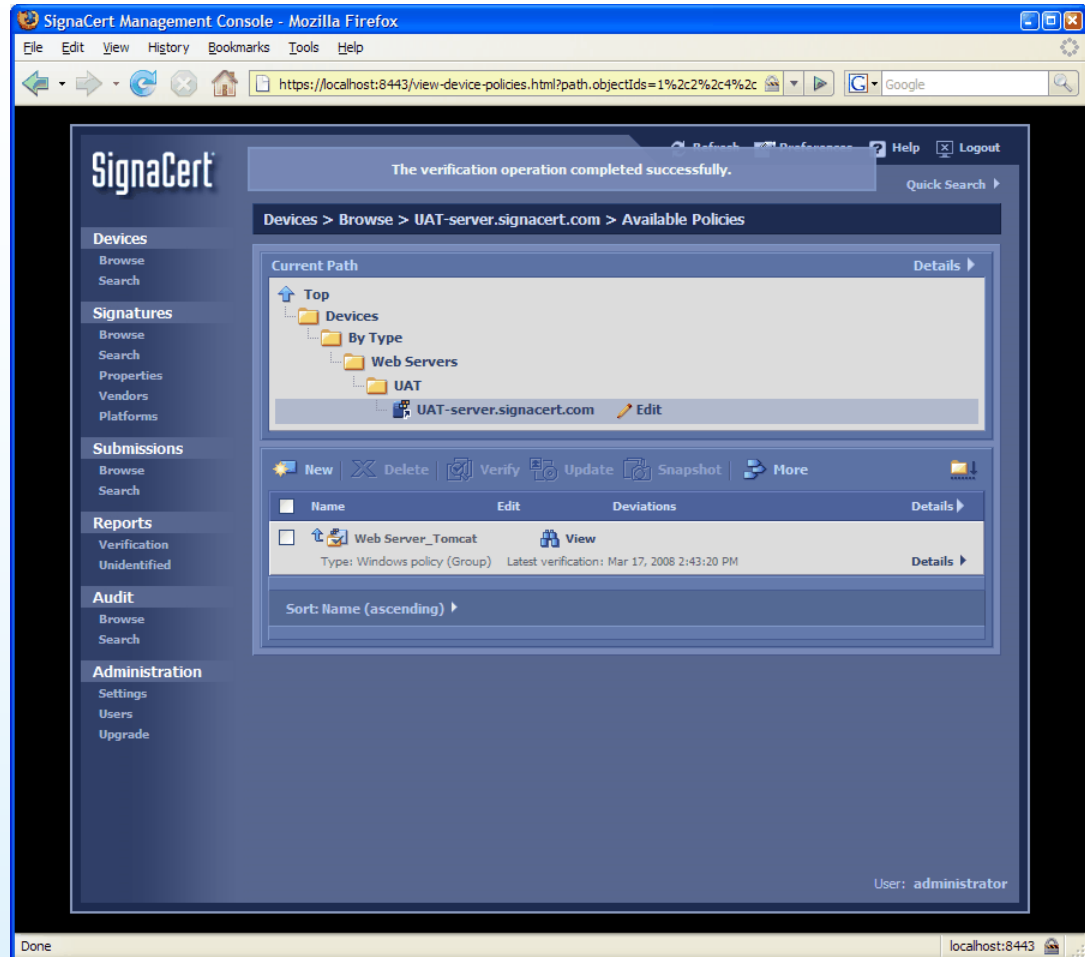
- Specify specific device name
- **Attach device** component with common connection settings
- Review attached connection settings
- Specify variables



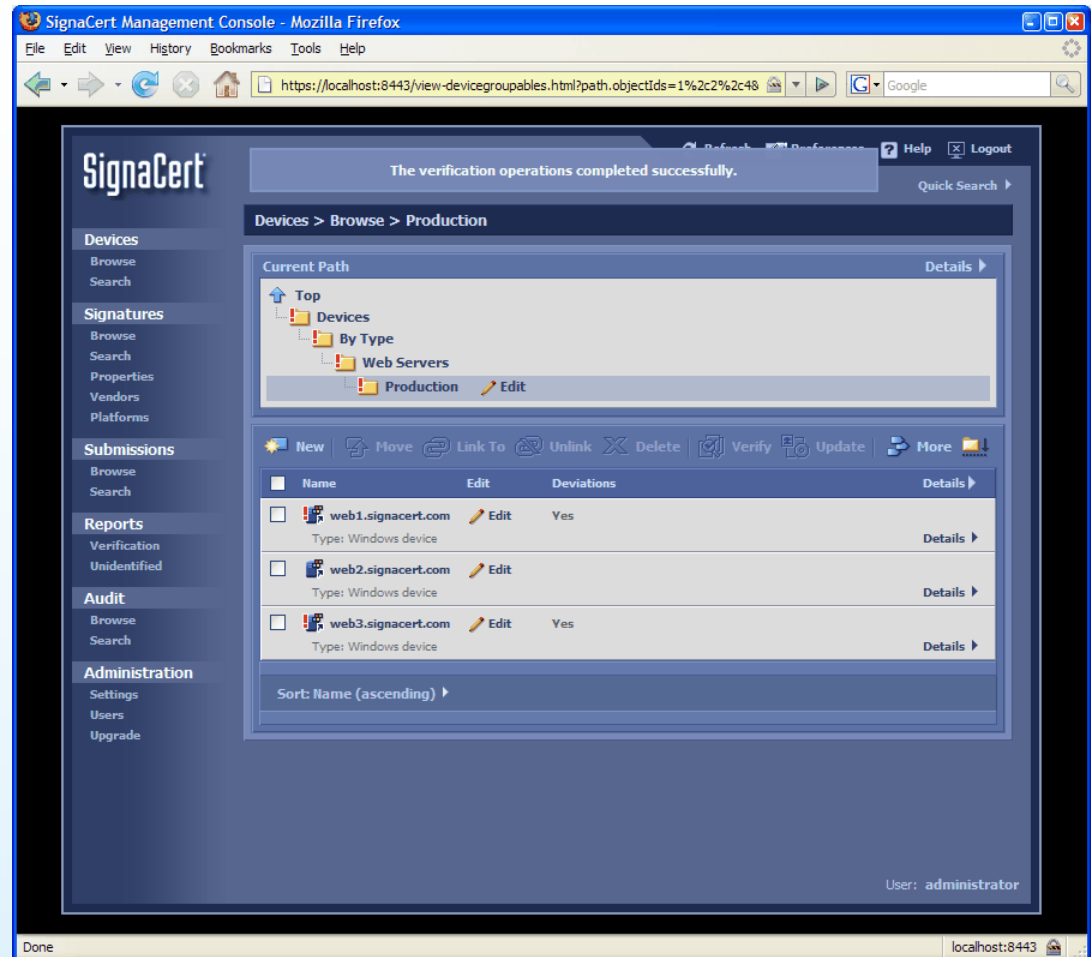
- Deploy Tomcat 6.0.14 to UAT Server
- Re-verify UAT device
- Deviations identified
- Confirm all changes related to 6.0.14



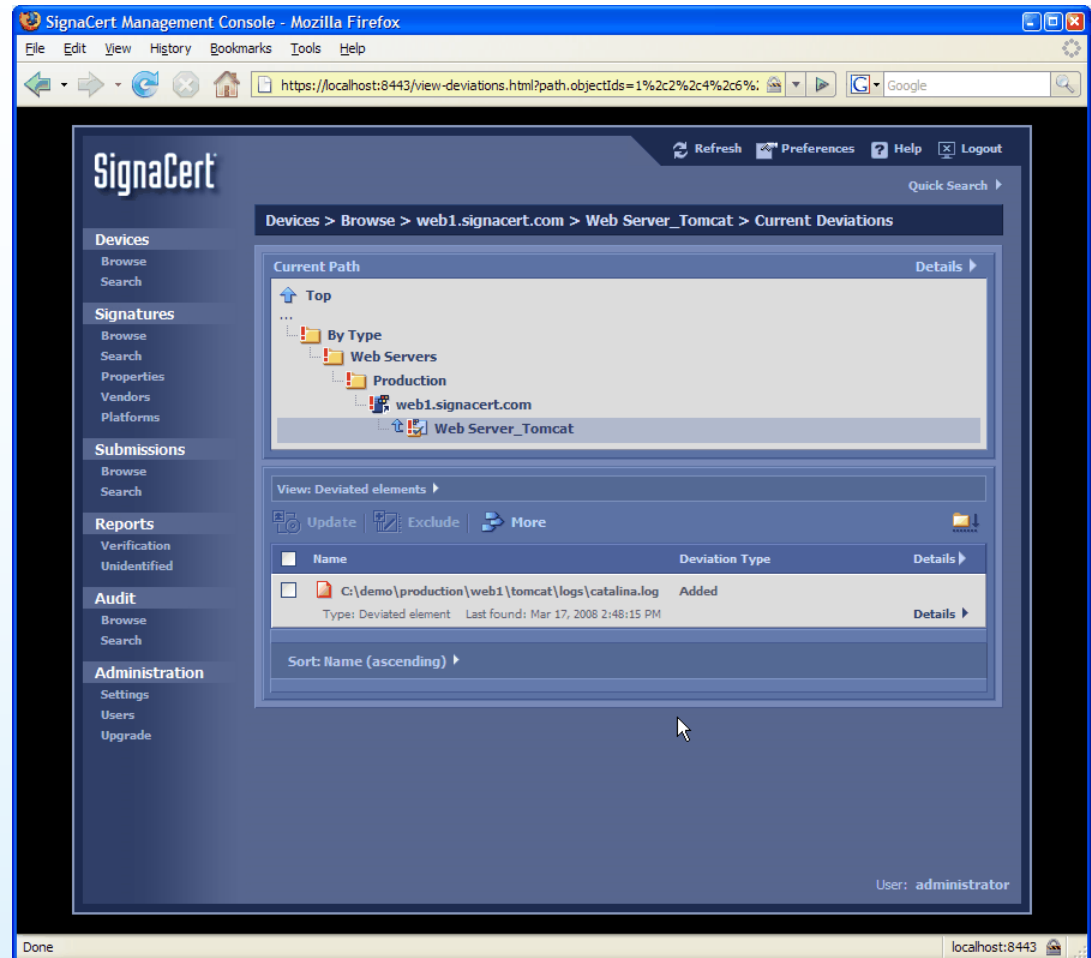
- Create a new snapshot
- Snapshot Complete
- Re-verify device



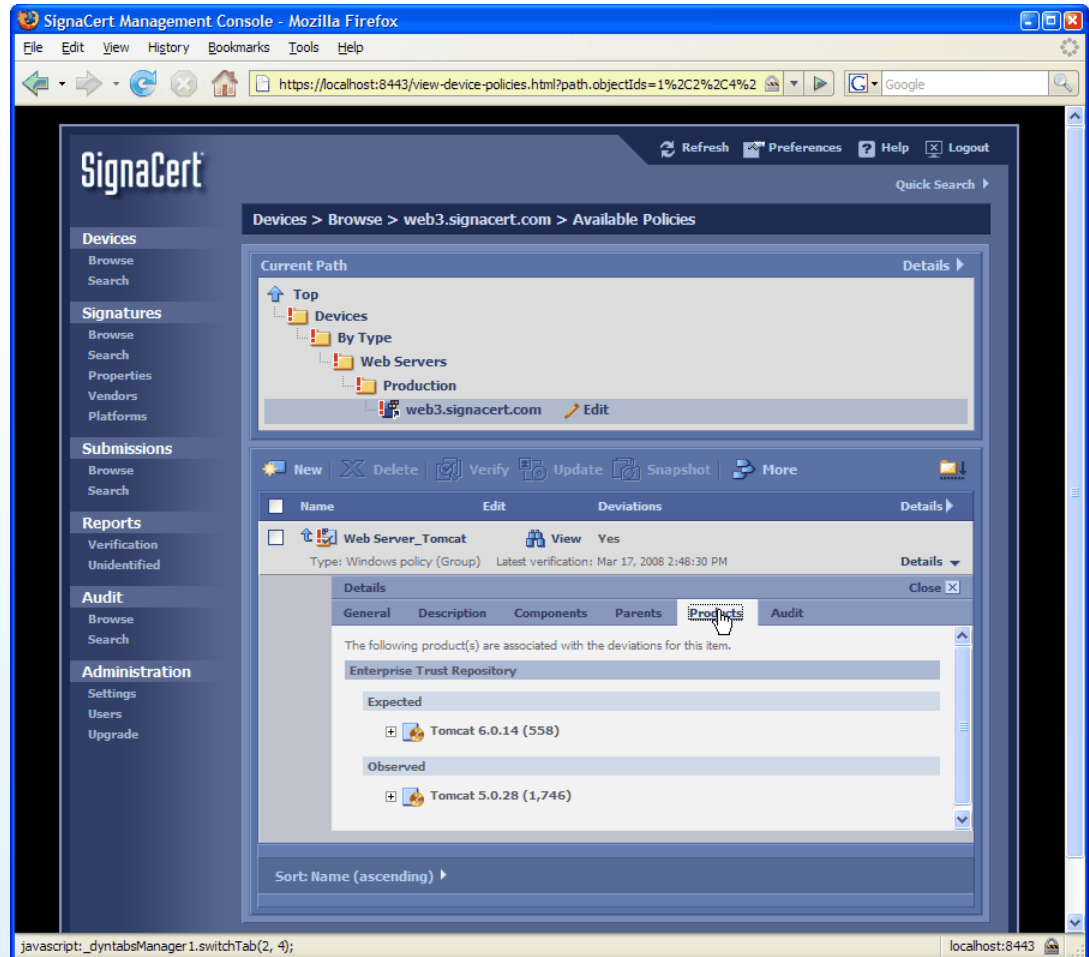
- Update production from 5.0.28 to 6.0.14
- Verify all production servers
- Deviations found!
 - web1.signacert.com
 - web3.signacert.com



- Drill into device
- Deviation is a log file
- No remediation required
- CAR: Update policy to exclude logs directory



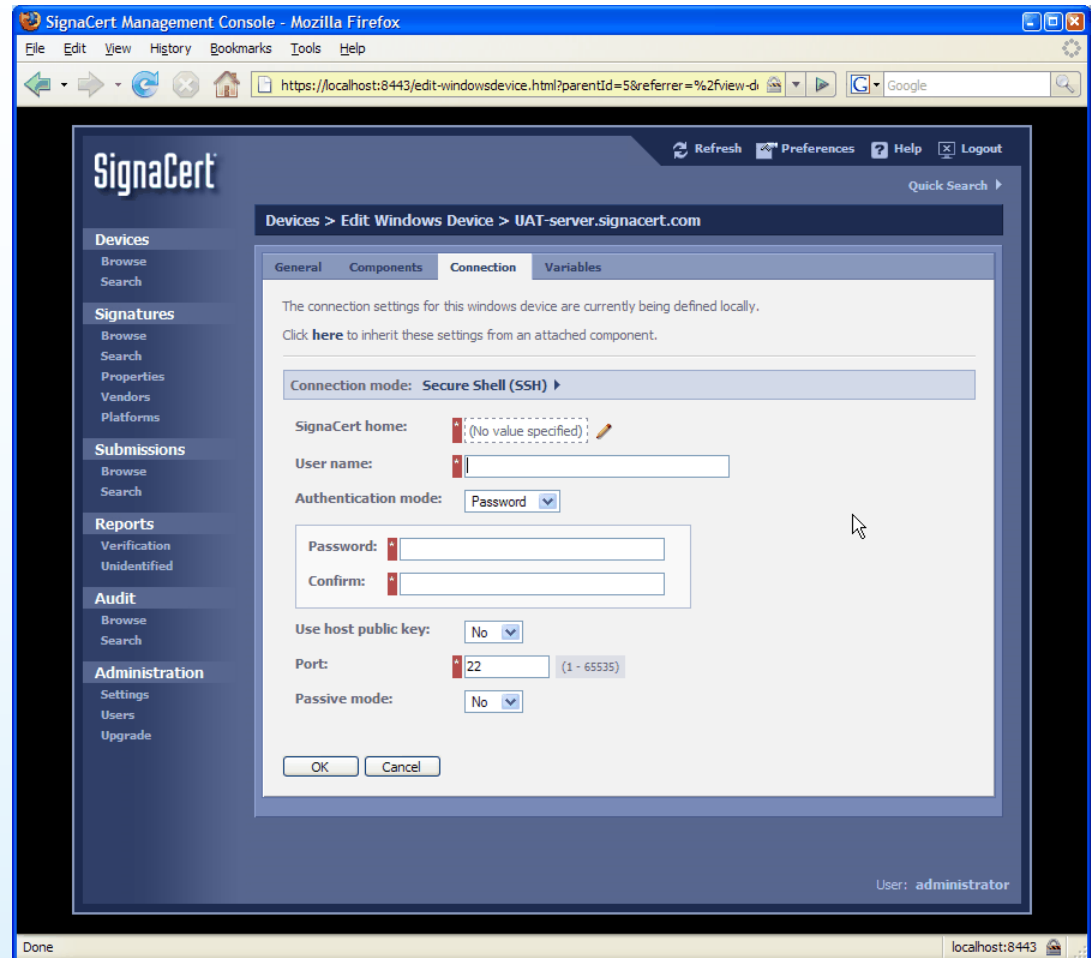
- Drill into device
- Identify what product deviations belong to
- Update was not deployed to web3
- CAR: Deploy Tomcat 6.0.14 to web3



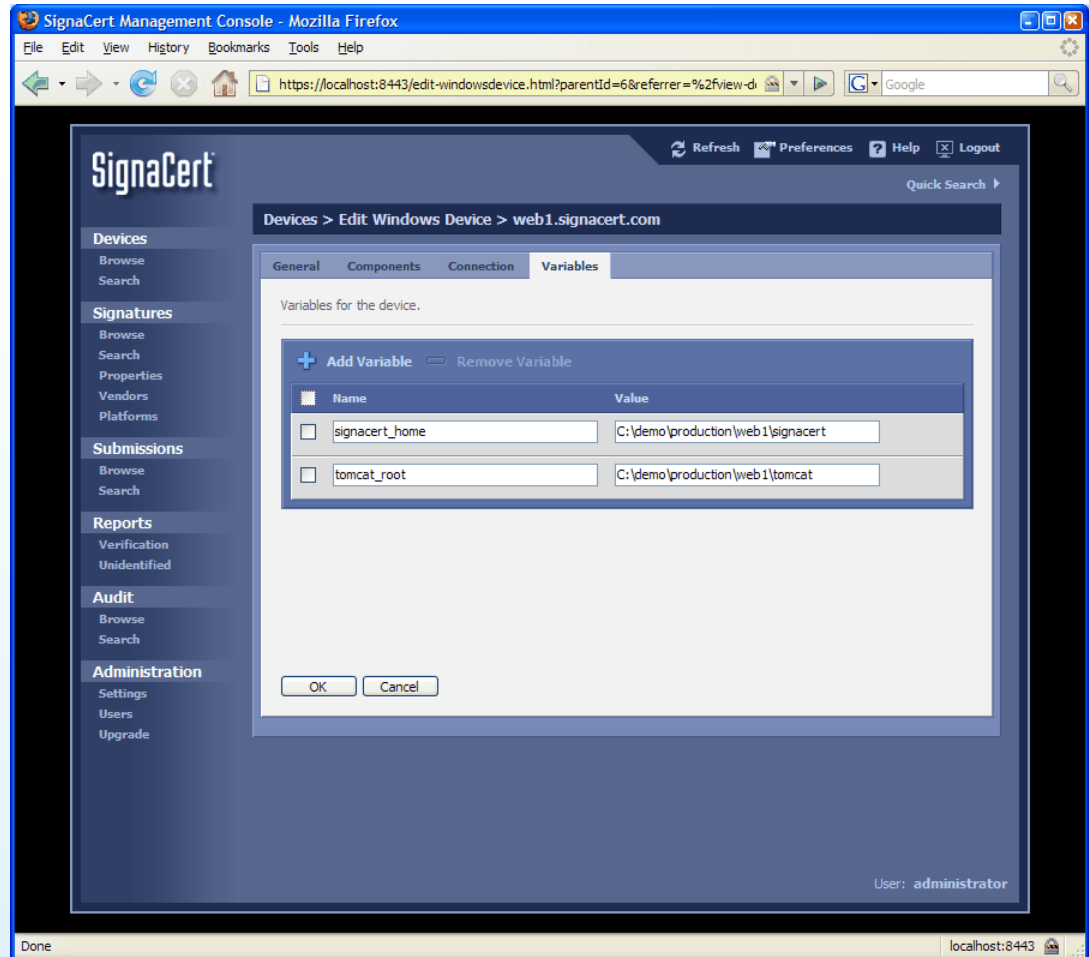
- Device connections
- Device components
- Mass attachment
- Snapshot wizard
- Group launching
- Integration with external scheduling tools
- Simplified properties
- Connection pool settings

- Supports multiple connection types
 - Window Mgmt
 - Secure Shell
 - Scheduled Task

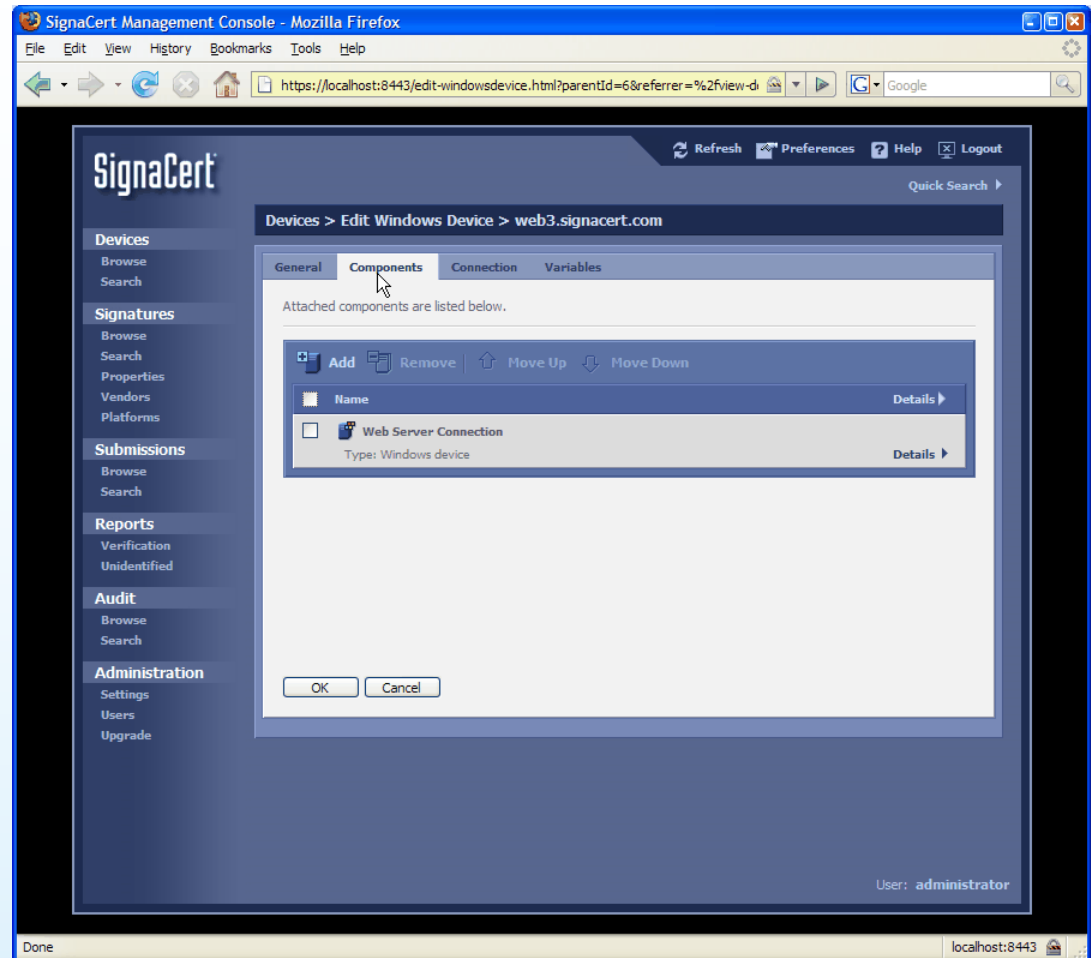
- Specify connection settings



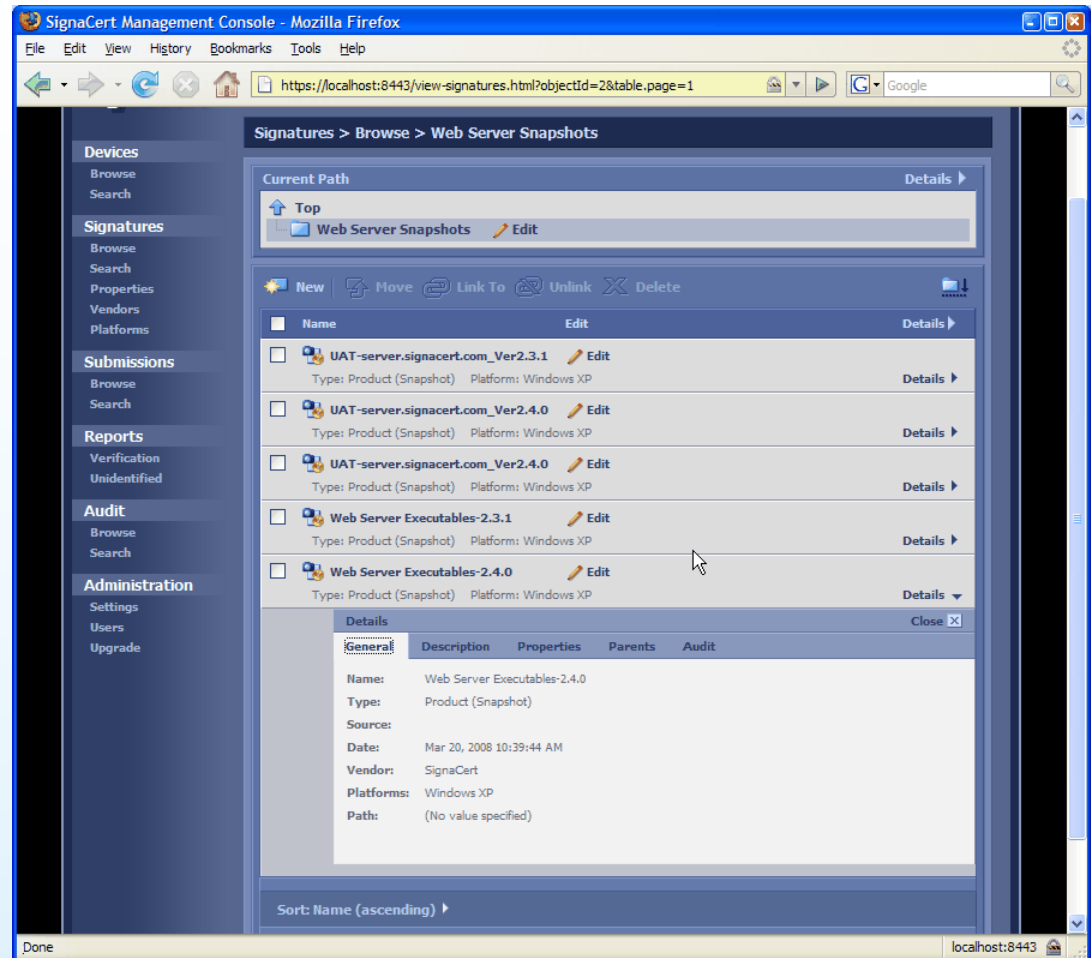
- Create device components
 - Create device with common connection settings
 - Create device with common variables
- Attach components to other devices



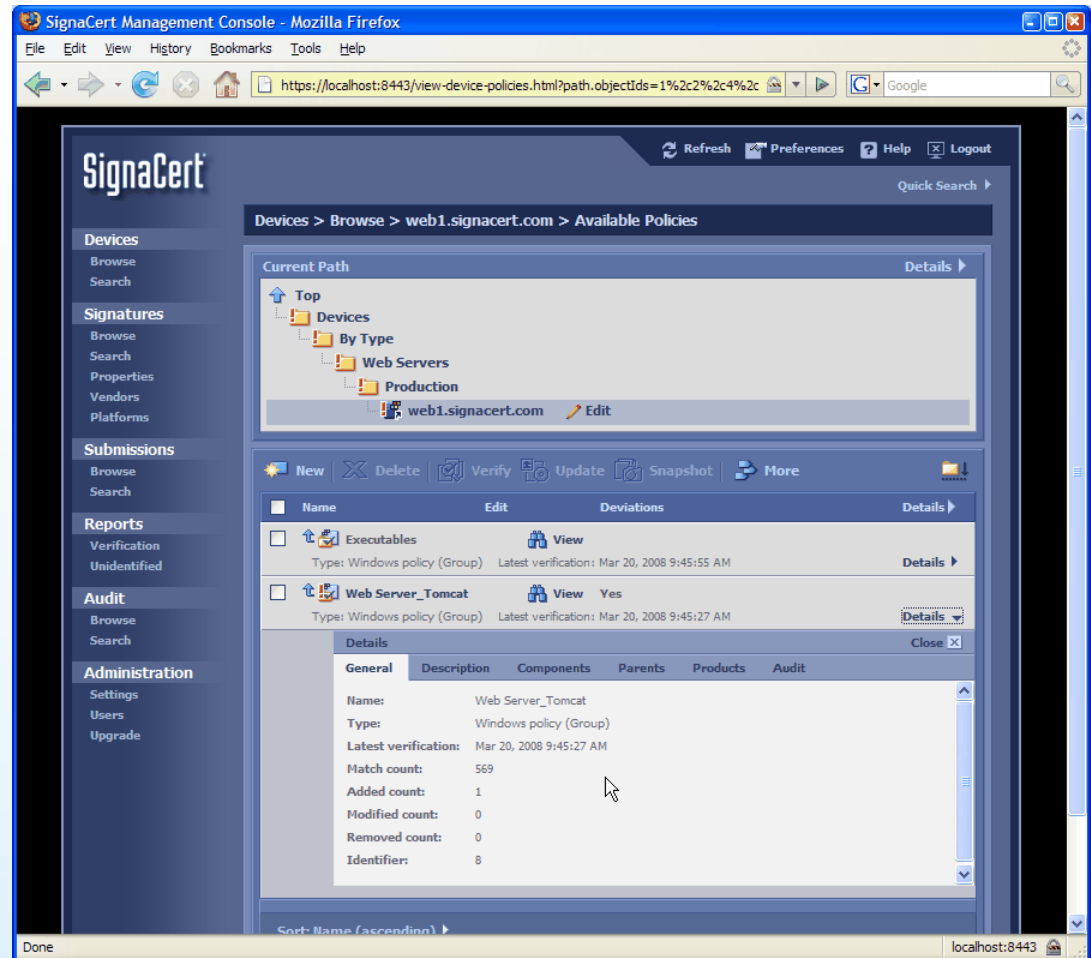
- Attach items to multiple items at one time
 - Devices component can only be attached to devices
 - Policy components can only be attached to polices



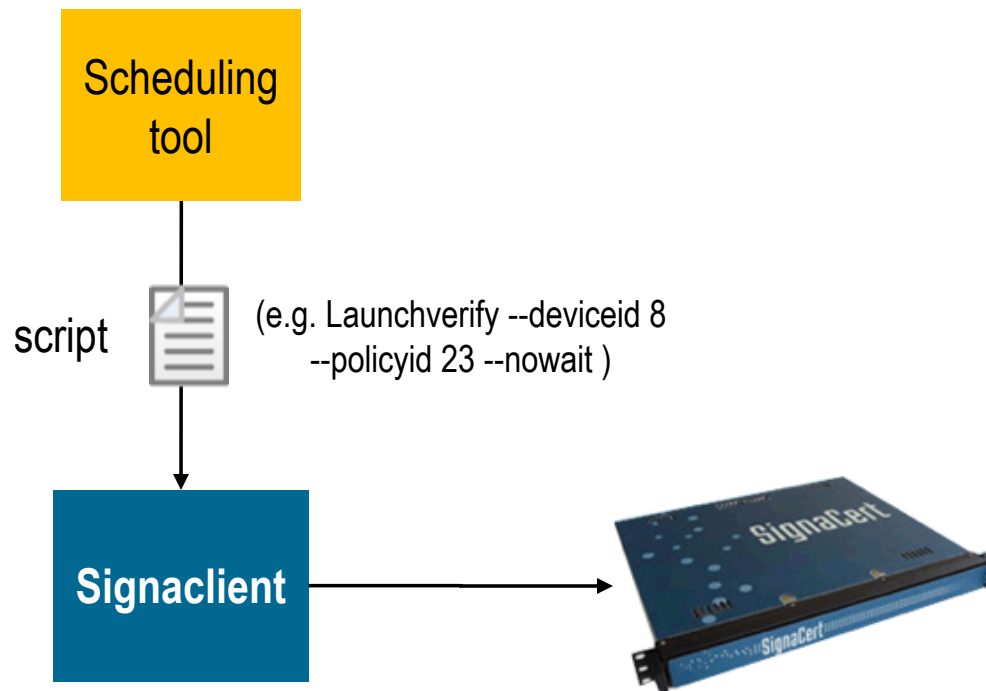
- Create a snapshot from ETS
 - Create new or update existing
 - Update policy
 - Auto-approve



- Trigger actions for an entire group
 - Verify all devices with all available policies
 - Snapshot all devices in the group

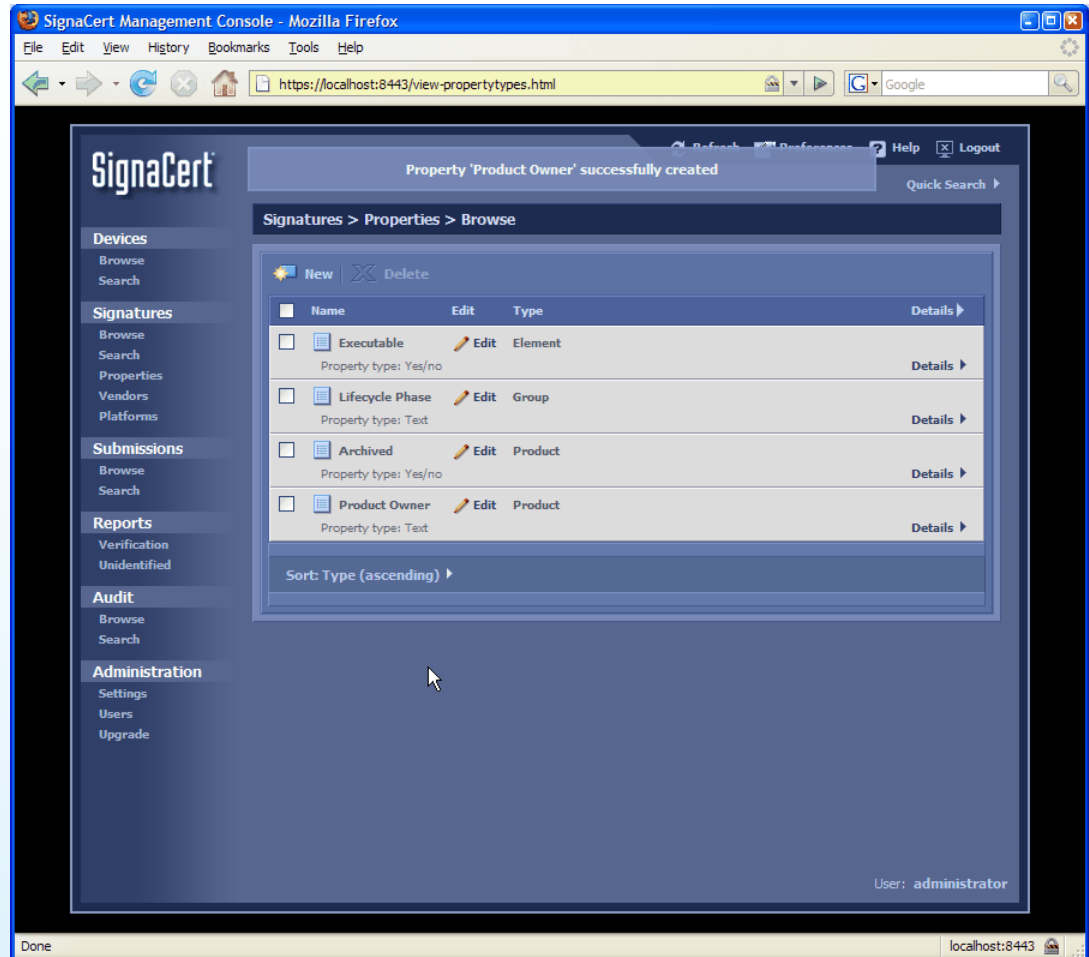


- Simple integration with external tools

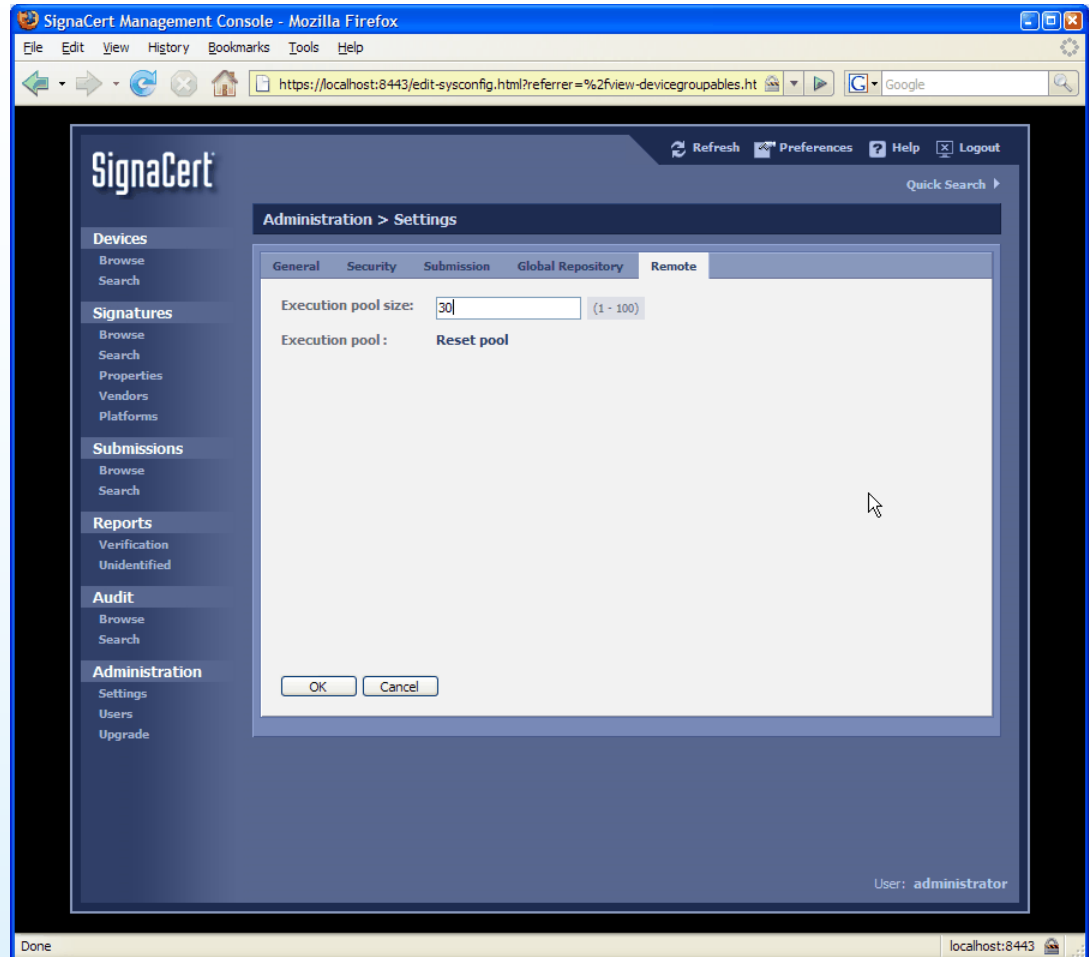


Results:
Verify all devices
in group 8 using
policy 23

- Properties moved to Signatures Group
- Simplified use



- Specify number of simultaneous outbound connections allowed
- Reset connections
 - For unresponsive connections



- Enable custom scripts—Use snapshot and verify commands with custom scripts on the client
- Greatly enhanced GTR performance
 - Faster response
 - Filtered responses
 - Better information (count by filename rather than by hash)
- Device and policy identifiers – can be used with CLI
- Submissions allow overwriting and updating of products
- Snapshot and verify commands integrated into client
- Notification integrated into client